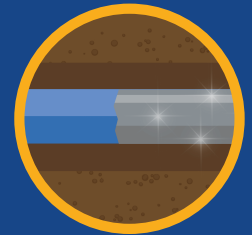


CO₂ PIPELINE REGULATION

NUMEROUS PHMSA FEDERAL PIPELINE SAFETY REGULATIONS COVER CO₂ PIPELINES

Category	PHMSA Regulation	Regulatory Activity
A - General	CFR 195.3	Requirements for design, construction, operation, control room management, integrity management and emergency response
	CFR 195.11	Regulated rural gathering lines
B - Reporting	CFR 195.52	Notice of Incident - Operators must report incidents at the earliest practicable moment following discovery
C - Design Requirements	CFR 195.106	Internal Design Pressure
	CFR 195.111	Fracture Propagation - CO ₂ pipelines designed to mitigate effects of fracture propagation
	CFR 195.112	New pipe - requirements associated with installation of new pipe.
D - Construction	CFR 195.206	Material Inspection - Visual inspection of components prior to installation
	CFR 195.210	Pipeline Location - Right of way selected to avoid dwellings
	CFR 195.234	Welds: Nondestructive testing
	CFR 195.248	Cover over buried pipeline
	CFR 195.250	Clearance between pipe and underground structures
	CFR 195.260	Valves: Location
E - Pressure Testing	CFR 195.304	Test Pressure
F - Operation & Maintenance	CFR 195.402	Procedural manual for operations, maintenance, and emergencies
	CFR 195.403	Emergency response training
	CFR 195.406	Maximum Operating Pressure
	CFR 195.407	Communications
	CFR 195.414	Inspections of pipelines in areas affected by extreme weather
	CFR 195.412	Inspection of rights-of-way
	CFR 195.440	Public Awareness
	CFR 195.446	Management of control rooms for operating and monitoring pipeline systems
	CFR 195.452	Integrity Management programs for inspection and maintenance of pipelines
G - Operator Qualification	CFR 195.505	Ensure pipeline personnel performing covered tasks are qualified
H - Corrosion Control	CFR 195.563	Cathodic Protection

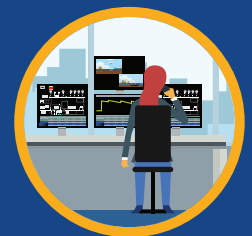
The U.S. Department of Transportation's Pipeline and Hazardous Materials Safety Administration (PHMSA) has numerous safety measures to strengthen its safety oversight of carbon dioxide (CO₂) pipelines around the country and protect communities. These include, but are not limited to:



Design Requirements



Construction



Operation & Maintenance



Emergency Preparation

